

MX 16.3

PNEUMO-MECHANICAL CORE CHUCKS



- ✓ Very compact size and robust
- ✓ Easy installation
- ✓ Perfect grip on the reel core
- ✓ Perfect control of the reel
- ✓ No maintenance
- ✓ For cores from 3" to 6"

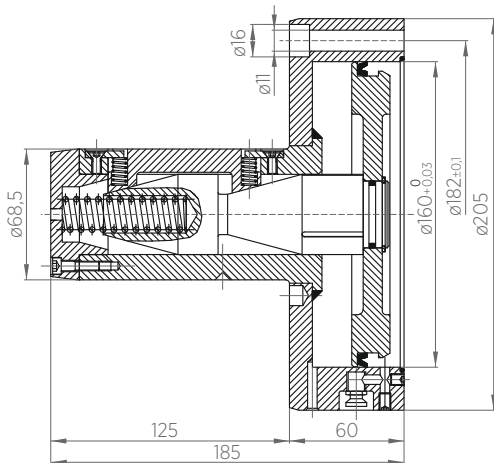
MX 16.3 pneumo-mechanical core chucks are provided with a pneumo-mechanical system which, using air pressure, expand or release a series of keys that guarantee a safe and good fixing on the reel core.

MX 16.3 chuck is very compact and robust; it guarantees safety for the operator, reliability on the reel control and no maintenance.

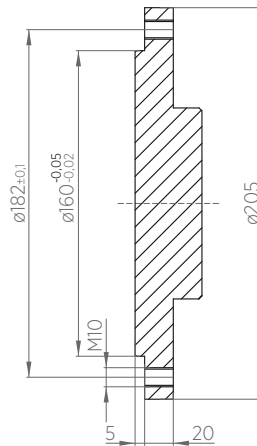
The basic version can fit cores with 70mm and 3" of diameter, whereas, thanks to AX adaptors, it can fit also reel cores with different dimensions: 4", 5" and 6".

For these characteristics of sturdiness, flexibility, long life span and ease of installation, MX 16.3 core chucks are widely used in the converting industry.

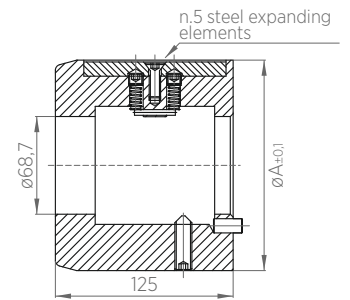
MX 16.3 chuck



Fixing flange (optional)



AX adaptors (optional)



TECHNICAL DATA

	MX 16.3	AX4	AX5	AX6
Inside core diameter	70, 76,2 (3")	101,6 (4")	127,5 (5")	152,4 (6")
A - mm		98,5	125	148
Max air pressure - bar	5	5	5	5
Max expansion - mm	68,5-80	98,5-104	125-130	148-155
Max load - N	12500	12500	12500	12500
Transmissible torque - Nm	450	600	650	800

*Data are subject to technical change without notice

**All data have to be considered for single chuck